

Every product tells a new story...

MERSEYSIDE AND HALTON WASTE PARTNERSHIP
ANNUAL REPORT 2012

INTRODUCTION



I am pleased to present this second Annual Report on the progress made to deliver sustainable management of household waste by the Merseyside and Halton Waste Partnership.

This report highlights the wide range of activities the Partnership has undertaken during the year to improve and deliver new waste management services to residents. Brand new facilities, joint working and innovative projects are all helping our local communities to increase their recycling and re-use of materials and reduce the amount of waste produced in the first place.

2011 has seen the production of RESOURCES Merseyside, the new Joint Recycling and Waste Management Strategy for Merseyside following a major public consultation. New challenging targets have been developed for Merseyside for recycling, waste prevention and carbon reduction. The Strategy also highlights the rapid pace of change of waste and resource management facing us now and in the years ahead. A key message is to recognise that waste is, in fact, a resource with a significant economic value.

We are delighted that the new Materials Recovery Facility at Gillmoss in Liverpool is complete and in operation. The Facility can process up to 250 tonnes of recyclable materials a day. Gillmoss also offers an exciting Recycling Discovery Centre for schools and community groups to visit and see what is happening to their recycling and learn about their environment. Education and awareness raising programmes are key to helping residents and businesses change their behaviour and make better use of their resources.

Above all we support the pathway towards zero waste by reducing the amount of waste we send to landfill. Progress continues to be made to identify a solution to recover value from household waste that cannot be recycled.

The targets in the new Strategy will be challenging to meet but this region continues to make progress, I hope our Annual Report offers you a snapshot of the work undertaken in the last year to deliver value for money services across Merseyside and Halton.

Neil Ferris
Chair. MHWP Senior Officers Working Group 2011/12



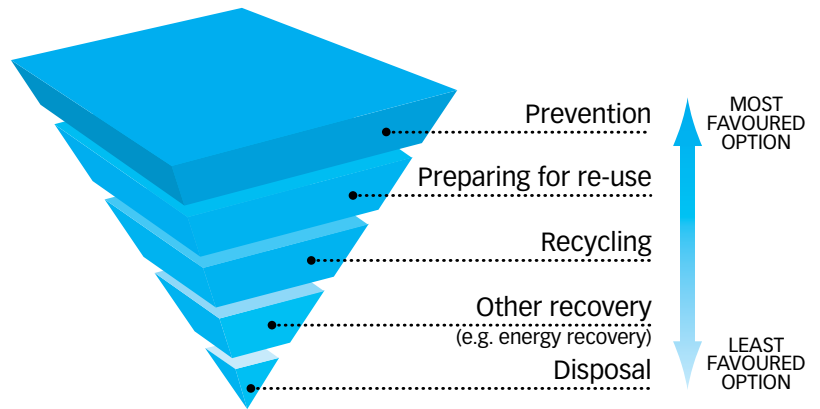
1. BACKGROUND

The Merseyside authorities together with Halton form the Merseyside and Halton Waste Partnership (MHWP) which consists of: Halton Borough Council, Knowsley Metropolitan Borough Council, Liverpool City Council, Merseyside Recycling and Waste Authority (formerly Merseyside Waste Disposal Authority), Sefton Metropolitan Borough Council, St Helens Metropolitan Borough Council and Wirral Metropolitan Borough Council.

The Partnership works together to manage the Local Authority Collected Municipal Waste (LACMW) in line with the Waste Hierarchy from not generating it in the first place (prevention) followed by re-use, recycling and composting then recovering energy from waste. Disposal of waste to landfill is the least preferable option.

2011/12 has seen performance improve across the Liverpool City Region supported by new facilities to divert waste away from landfill and residents increasing their participation in recycling as well as reducing the amount of waste they produce in the first place.

The Waste Hierarchy

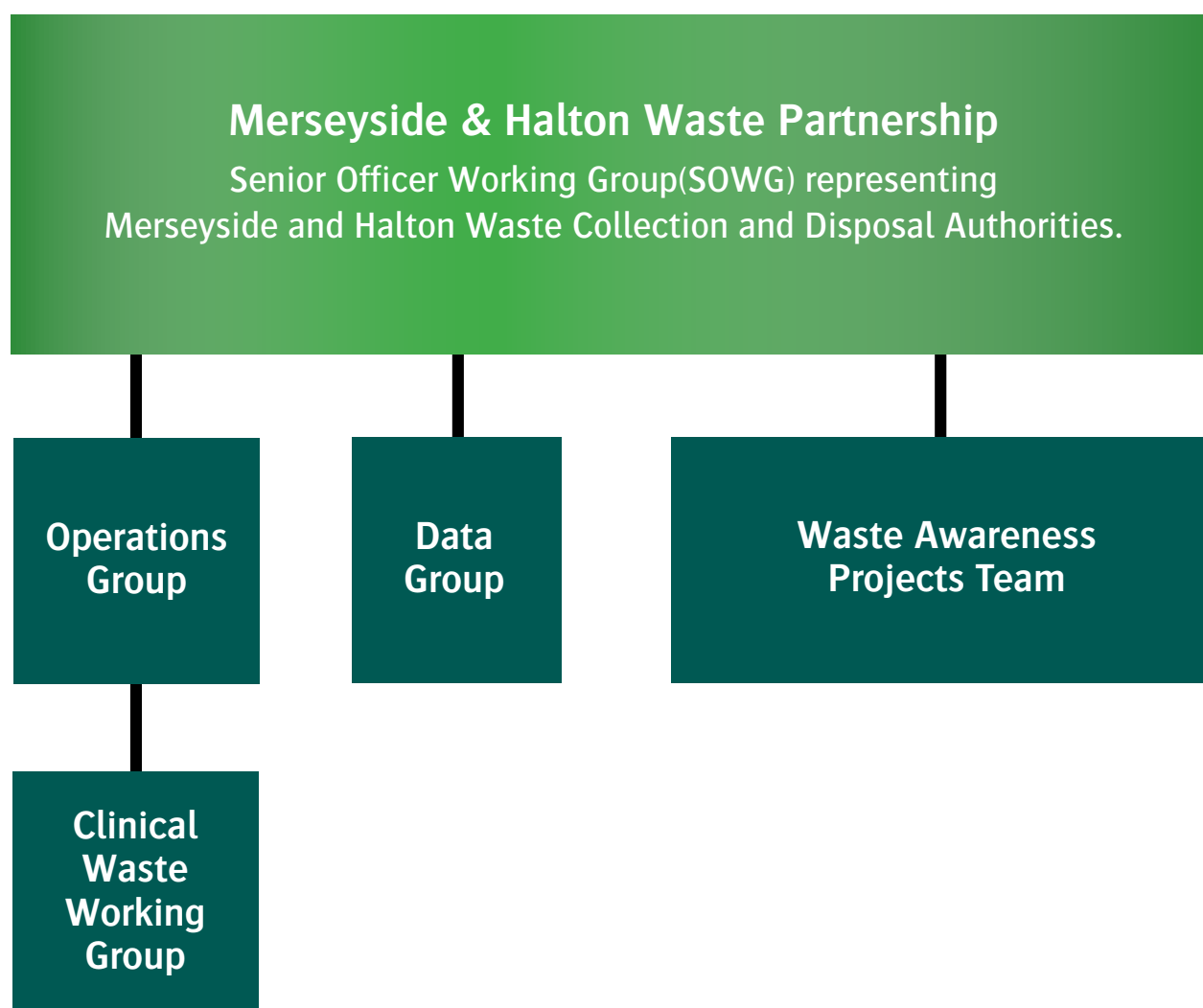


2. PARTNERSHIP STRUCTURE

The Partnership is managed through a Senior Office Working Group (SOWG) made up of senior officers from the seven partner authorities.

The SOWG works to an annual work programme (see section 4b) to deliver the objectives of the two Waste Management Strategies covering the City Region (one for Merseyside and one for Halton). Halton is a Unitary Authority and has its own statutory responsibilities for waste management in their area. The SOWG is supported by sub-groups tasked with taking forward initiatives in line with the agreed objectives as directed by the Partnership.

Merseyside Recycling and Waste Authority undertook the role of the Chair of SOWG in 2011/12, taking over from St Helens Council and the circulating role will pass to Liverpool Council for the period 2012/13.



3. RESOURCES Merseyside 2011-2041

The revised Joint Recycling and Waste Management Strategy for Merseyside¹ (JRWMS) has been developed in consultation with residents, elected members and other stakeholders and interested organisations.

This new headline document called “RESOURCES Merseyside” is a route map for partners to deliver sustainable waste management, transform the waste agenda and move towards greater resource efficiency.

A range of research projects were undertaken to provide evidence and data to inform the review of the Strategy. These included:

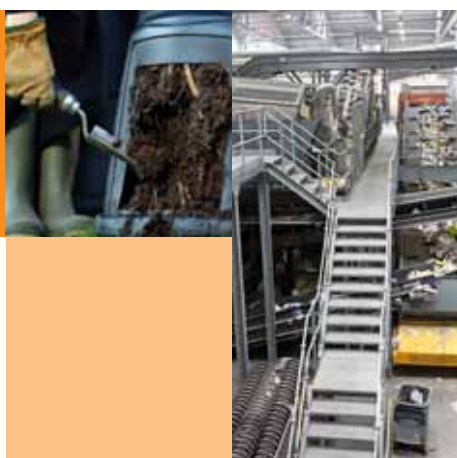
- Waste Composition Analysis;
- Issues and Options Reports;
- Public Consultations;
- Future Trends in Resource Use and Management Study; and a
- Strategic Environmental Assessment.

“RESOURCES Merseyside” sets out options for achieving a range of targets. It is for district councils to choose how they tackle the challenges identified in consultation with their local communities. A menu of priority options has been identified as actions for change to deliver the Strategy. The options chosen

by each district have been reflected in the production and adoption of a District Council Action Plan.

The public consultations on the draft Strategy demonstrated that a majority of residents and stakeholders who responded supported the direction of the Strategy with a focus on waste prevention, education and recycling services. Satisfaction with current household waste management services was generally high. Residents felt the need for a higher level of engagement to build understanding and support for the Strategy and in promoting positive behavioural change.

The Strategy is in the process of ratification by each district partner. Four of the six districts have given approval to date and it is anticipated that the Strategy will be fully adopted by summer 2012 when it will become available for download from partner websites.



¹ Halton has a separate but aligned Waste Management Strategy

The Green Community Shop & Centre

Tel: 653 2269

49/51



4. PARTNERSHIP PERFORMANCE

This section shows how the Waste Partnership has performed in delivering its work plan over the period April 2011 to March 2012.

a) Performance Indicators

Table 1 outlines the performance of each district in 2010/11 and 2011/12 and the comparative change between the two.

Table 1: Percentage (%) Recycling Rates

Date	Halton	Knowsley	Liverpool	MRWA	Sefton	St Helens	Wirral	Partnership total
2010/11	38.10	31.20	26.80	51.35	40.60	31.30	39.90	36.60
2011/12	39.90	32.00	26.20	54.41	40.80	31.70	40.60	37.10

Table 2: Contractual Performance for Household Waste Recycling Centres (HWRC) 2010/11

Indicator	2010/11 Target	2010/11 Actual	2011/12 Target	2011/12 Actual
HWRC Recycling (Merseyside and Halton)	51.21%	52.46%	51.53%	55.29%





Table 3 measures performance across Merseyside and Halton based on the former National Indicators.

Table 3: Performance indicators

Indicator	Merseyside Actual 2010/11	Merseyside Target 2011/12	Merseyside Actual 2011/12	Halton Actual 2010/11	Halton Target 2011/12	Halton Actual 2011/12
Residual Household Waste Per Household (kg)	693	695	655	682	799	636
Household Waste Reused, Recycled or Composted (%)	36.5	36.8	36.9	38.1	40.0	39.9
Local Authority Collected Municipal Waste Landfilled (%)	60.7	63.2	60.0	59.56	62.0	57.6



b) Partnership Work Plan 2011-2012

Table 4 identifies key actions taken by the Partnership against an agreed work programme outlining the priority areas for the year. This is a live document linked to the Joint Recycling and Waste Management Strategy (JRWMS) for Merseyside and the Halton Waste Management Strategy.

Table 4: 2011/12 MHWP Work Plan Priorities and Actions

Priority 1. Complete the review of the Joint Recycling and Waste Management Strategy for Merseyside

Progress:

- Final Strategy produced in November 2011 with related District Council Action Plans (DCAPS) and ratification process commenced.
- Section 3 of this report gives more information on the review.

Priority 2 (i). Establish best practice and systems to increase recycling to 50% by 2020

Progress:

- Increased recycling rates across the Partnership (see table 1).
- Gillmoss Materials Recovery Facility (MRF) completed and operational by Veolia taking co-mingled recyclates from Knowsley, Liverpool and Halton households.
- Refurbishment of the Otterspool Household Waste Recycling Centre (HWRC) in Liverpool was completed.
- A new HWRC being constructed at Kirkby in Knowsley won an industry standard CEEQUAL award (Civil Engineering Environmental Quality Assessment). The HWRC will open in spring 2012.
- Halton's Recycle Bank incentive scheme continues to reward recycling by residents.
- 1250 litre collection tanks for used and leftover cooking oil fitted at all 14 HWRCs. This will be refined to produce renewable electricity for the National Grid. Each tank will produce enough electricity to power one average household for a year.
- Introduction of wheeled bins in areas of North Liverpool to replace bin bags.

Priority 2 (ii). Products made from your recycling

- Co-mingled recyclate provided by residents on Merseyside and Halton goes to the Materials Recovery Facilities in Gillmoss and Bidston. These materials are sent to reprocessors who specialise in particular materials and then used in the manufacture of new products depending on the needs of the market which include:
 - Used aluminium beverage cans made into new beverage cans and items such as bicycle frames;
 - Used steel beverage cans made into new cans;
 - Old corrugated card into new brown cardboard for packaging;
 - Newspapers and magazines recycled into newsprint and other paper products;
 - Mixed glass becomes a sand replacement or aggregates substitute for products such as coloured block paving used in traffic control;
 - Plastic bottles are granulated to be made into new bottles but can also be used to make products including textiles, street furniture and window frames;
- Where materials are sorted at the kerbside, bring banks and HWRCs, these resources can also be used for recycling and re-use including:
 - Used cooking oil is converted into a biofuel for use in renewable energy power stations to provide carbon neutral electricity in the UK; and
 - Quality clothes and shoes can be re-used; rags can be recycled as cloths, industrial wipers and as a filler in soft furnishings.

Priority 3. Reduce the total amount of waste produced per household.

Progress:

- Development of the MHWP Waste Prevention Action Plan as a supplementary part of the JRWMS.
- 5474 people directly engaged across 14 Love Food Hate Waste (LFHW) campaign events and 2388 questionnaire completed by residents.
- LFHW "Train the Trainer" programme provided 12 workshops to community professionals and volunteers across Merseyside and Halton.
- Potential reach of LFHW messages was over 1.2 million people; 200,000 at events, 420,000 at a Liverpool 1 community week event and 600,000 listeners to a three week Christmas campaign on Radio City.
- 72 items of media coverage through sponsorship of It's Our World pages in Trinity Mirror newspapers and 30 articles on line.
- Textile Stakeholder Forum in development to commence from April 2012.
- 696 compost bins sales across the Partnership area.
- 28,455 households registered to the Mail Preference Service (MPS) reducing levels of junk mail by approximately 4kg per person per year²

² MPS data

Priority 4. Promote behavioural change through delivery of education and awareness.

Progress:

- 3634 visitors to the Recycling Discovery Centres at Bidston and Gilmoor MRFs.
- MRWA attended 139 events across the Partnership area and direct engagement with 11,013 people.
- Development of waste prevention programme for school visits at the Southport Eco Centre. Commenced in the last quarter of 2011/12 with 829 students engaged.
- 7000 green bag (for compost) and 5000 blue bag (for WEEE) giveaways at HWRCs.
- Pro Recycling Behaviour Research project led by Wirral MBC in March 2012 to identify residents' behavioural changes using recycling bags and barriers to recycling.
- Eco Parent Support Network – practical workshops to ensure behavioural change related to food waste.
- £20,000 Community Resource Action Fund funded by MRWA and Veolia Environmental Services awarded to 11 projects from:

Knowsley

Knowsley Community Recycling Services;

Liverpool

CREATE, Fairfield Scout Group, Furniture Resource Centre and Liverpool World Centre;

St Helens

Working Worms;

Wirral

Green Community Shop and Centre, Hillside Primary School, North Birkenhead Development Trust, Weatherhead High School and Wirral Partnership Homes.



Priority 5. Effective management, development and governance of the Merseyside and Halton Waste Partnership

Progress:

- Review of recycling credits for textiles with workshops for charities and other recipients. MRWA made the decision to cap recycling credits for textiles at £25 per tonne and reinvest the remainder of the budget in 2012/13 to incentivise greater textile recycling and reuse.
- On-going development of an Inter Authority Agreement by partners to resolve outstanding issues for Liverpool and Wirral councils.
- Agreement to review the current payment mechanism to fund the Waste Disposal Authority in 2012/13 to ensure the payments from district councils are fair and positively benefit the delivery of the objectives of the new JRWMS.
- MRWA and Partnership responses on 8 key national and local consultations which would impact upon the delivery of Local Authority waste services.

Priority 6. Joint working in delivery of services.

Progress:

- Progression in identifying the best solution to deliver MRWA's Resource and Recovery Contract (RRC) with the announcement of final two bidders to extract Energy from Waste for waste that has not been recycled.

Priority 7. Collection and treatment options to process kitchen waste

Progress:

- Future provision of food waste collections and treatment has been considered as part of the Strategy review and included as a Priority Delivery Option for the districts. Further consideration will need to be given with the development and award of the RRC and central government announcements for Weekly Collections Support Scheme and increased support for small scale AD provision.

Priority 8. Develop opportunities to support third sector waste management activities and introduction of trade waste recycling schemes.

Progress:

- Successful Trade Waste pilot scheme undertaken at Bidston HWRC. This offered a service to businesses that may have been displaced from using the HWRCs since the introduction of the HWRC Commercial Vehicle Permit Scheme.



c) Carbon Outputs

Delivery of the new JRWMS for Merseyside will contribute to the low carbon economy in the Liverpool City Region and the impact on climate change by reducing the carbon emissions from waste management services. The Partnership and Veolia Environmental Services currently uses the Environment Agency's Waste and Resources Assessment Tool for the Environment (WRATE) to calculate the lifecycle assessment of the resources used and operation across a range of waste management processes. Central government is developing a consistent methodology to measure carbon impacts from existing waste data systems which should be in place by 2012/13.

Table 5 shows the baseline of the contract operations for Veolia Environmental Services at 16 HWRCs, 2 MRFs and 4 waste transfer stations across Merseyside and Halton. This demonstrates a 16,000 tonne reduction in carbon emissions in the last contract year.

Table 5: Carbon Emissions (tonnes CO² equivalent.)

	April 2009-March 2010	April 2010-March 2011
Transportation	9,309	4,076
Intermediate facilities	3,804	3,643
Recycling	-41,939	-45,060
Recycling (treatment) recovery	657	818
Landfill	115,500	107,646
Totals	87,332 tonnes	71,122 tonnes



d) Waste Prevention Outputs

The Partnership joined a national consortium of Local Authorities, Department of Environment, Food and Rural Affairs and WRAP in November 2011 working with ERM consultants in the development of a Waste Prevention and Carbon Toolkit. This will help provide more robust evidence on the benefits of funding waste prevention projects. Two projects have reported using the Toolkit during 2011/12 as detailed in Table 6.

Table 6: Waste Prevention Projects

Project	Tonnes diverted from landfill	Carbon avoided (CO² equivalent) tonnes	Waste Management cost savings (£)
Love Food Hate Waste	6,500	24,000	360,000
Home composting	104.4	9.40	7,308
Totals	6,604.40 tonnes	24,009.40 tonnes	£367,308



5. LOOKING FORWARD

This report shows that significant progress and improvements have been made in the last year by the Partnership with positive contributions made by residents to increase their recycling and reduce their waste. There are further challenges ahead to deliver the new Joint Recycling and Waste Management Strategy for Merseyside and Halton's waste management priorities which will form the basis of the SOWG Work Plan for 2012 onwards.

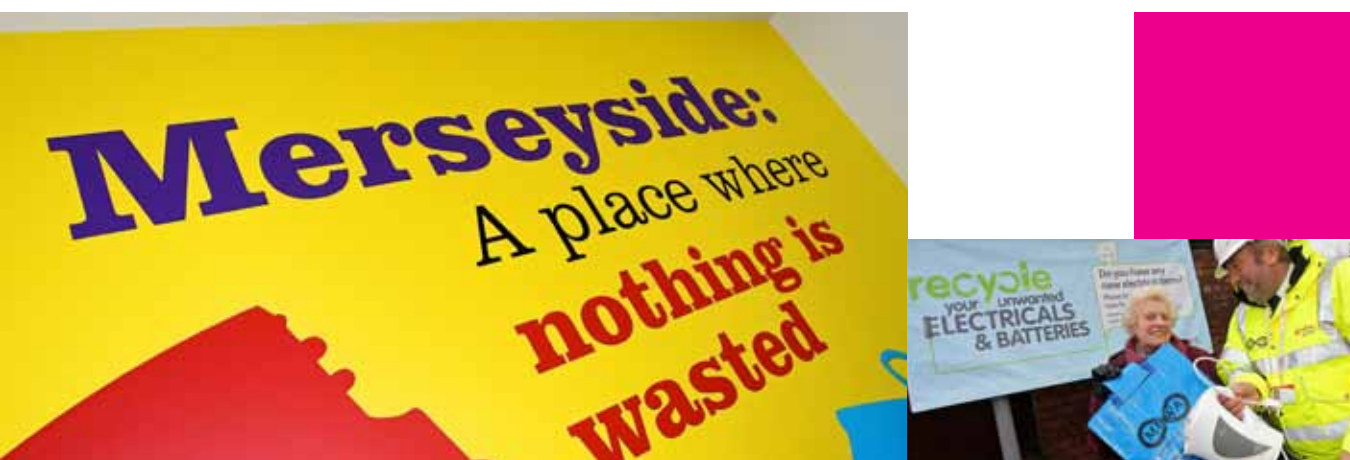
These key aims will include:

- 50% recycling rate to be achieved by 2020;
- Reducing the carbon impacts of waste management;
- Maximise waste prevention;
- Maximise landfill diversion/recovery or residual waste;
- Raising awareness and promoting behavioural change; and
- Encouraging sustainable economic activity associated with waste management.

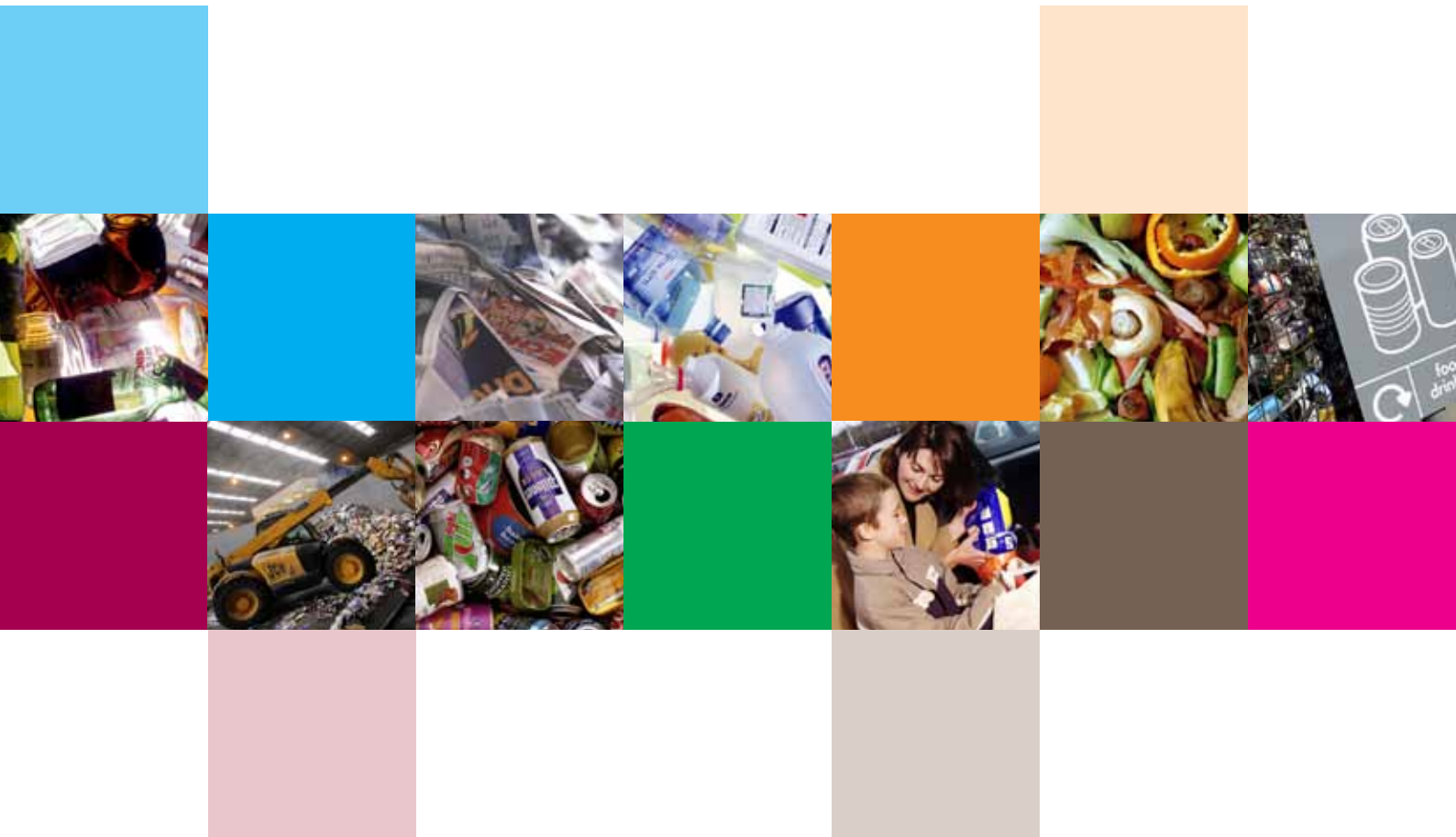
A key element in this delivery will be the announcement of a preferred bidder for the Resource and Recovery Contract being tendered by MRWA expected in autumn 2012.

The Partnership will need to determine how it wishes to progress its inter relationships in light of DEFRA confirmation that an Inter Authority Agreement is not a requirement to receive Waste Infrastructure Credits for the Resource Recovery Contract.

By working together and with other organisations, the Partnership can help address the broader environmental challenges of sustainable waste management, reducing carbon emissions and resource efficiencies whilst providing value for money services in the current financial climate.







The Merseyside and Halton Waste Partnership will continue to work with residents, communities and businesses to help them reduce waste, recycle more and address some of the major resource opportunities and challenges facing our society over the coming years. Information on recycling, re-use and waste prevention initiatives can be found on the Recycle for Merseyside and Halton website:

www.recycleformerseysideandhalton.com

Tel: 0151 255 1444
 Fax: 0151 227 1848

Email: enquiries@merseysidewda.gov.uk

